

For Windows 10 do this before loading the drivers

1. Windows Key + R
2. Enter shutdown.exe /r /o /f /t 00 ← These are Zeros Note the spaces
3. Click the "OK" button
4. System will restart to a "Choose an option" screen
5. Select "Troubleshoot" from "Choose an option" screen
6. Select "Advanced options" from "Troubleshoot" screen
7. Select "Windows Startup Settings" from "Advanced options" screen
8. Click "Restart" button
9. System will restart to "Advanced Boot Options" screen
10. Select "Disable Driver Signature Enforcement"
11. Once the system starts, install the drivers

PCSGU250 Driver Installation in Windows 7

First download the driver files from:

http://www.velleman.eu/downloads/files/downloads/pcsgu250_winusbdrv2.zip

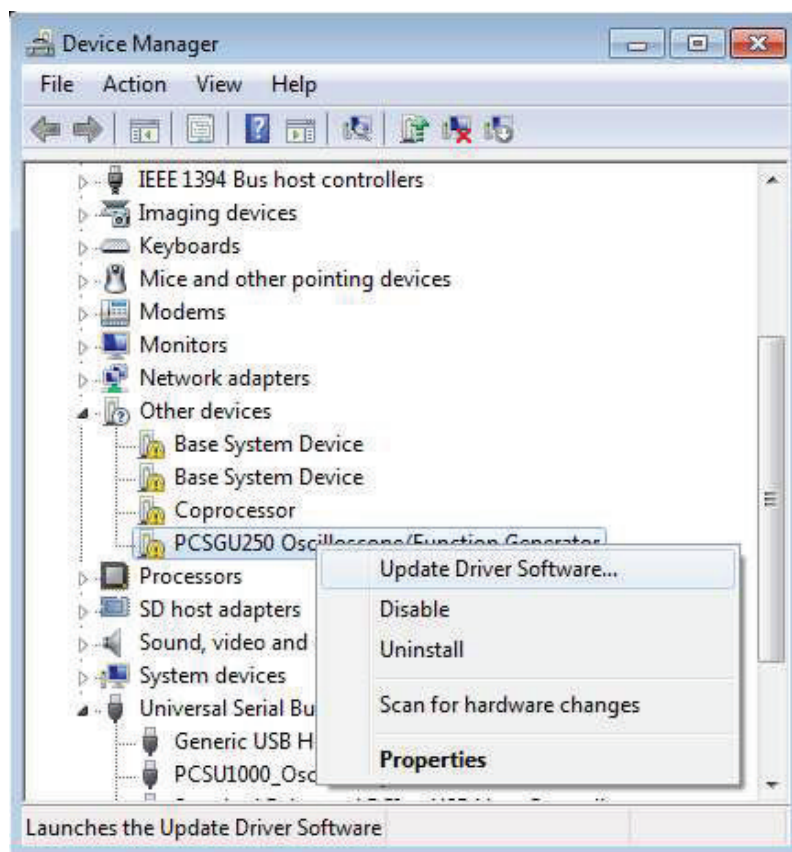
Extract the zip file to a folder.

When installing the driver, you have to browse to this folder.

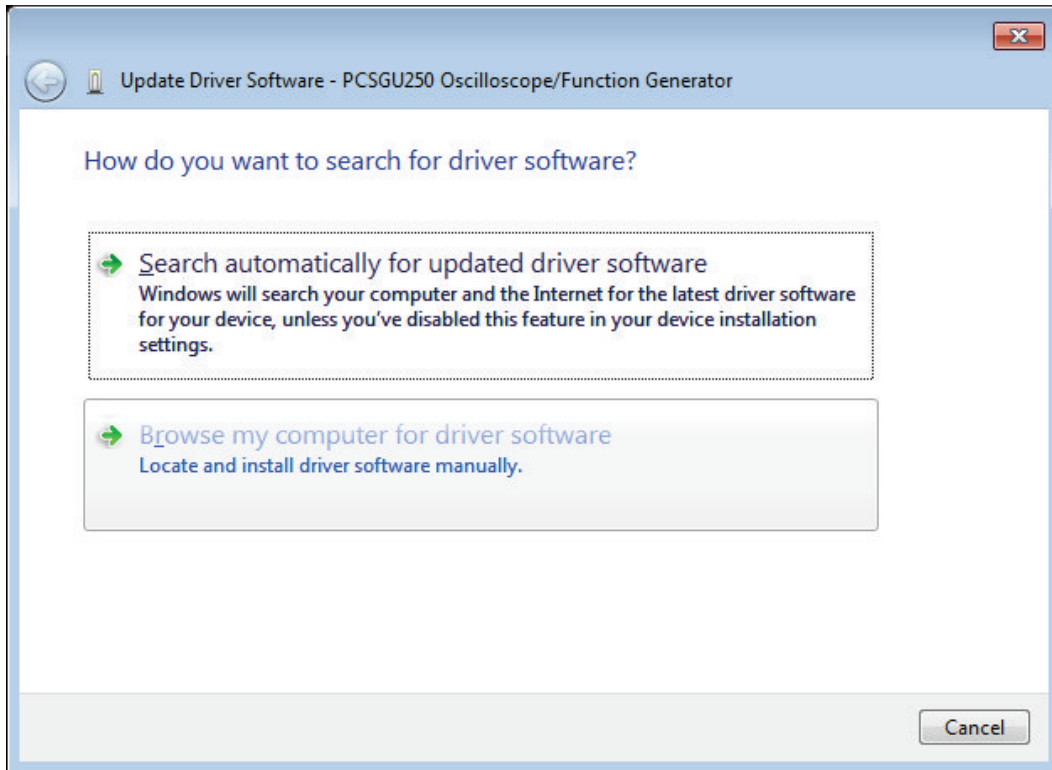
Now you can plug in the USB connector of the PCSGU250. You should be prompted with the Windows *'Found New Hardware Wizard'*.

If the wizard did not open, you can open it manually through the following steps:

- Press the **Windows key + R**
- Type **devmgmt.msc** and press **OK**
- Search for a **'PCSGU250 Oscilloscope/Function Generator'** entry under the *Other devices* category in the Device Manager
- Right-click the entry and click **Update Driver Software...**

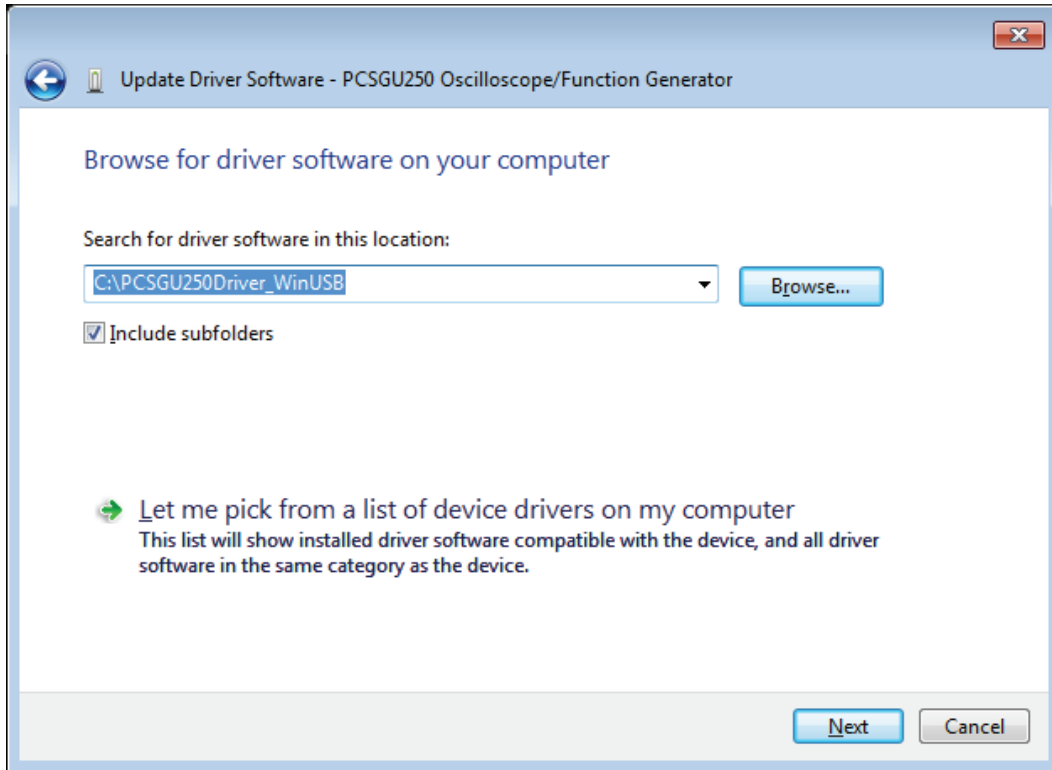


You should now be prompted with the **'Update Driver Software'** dialog.



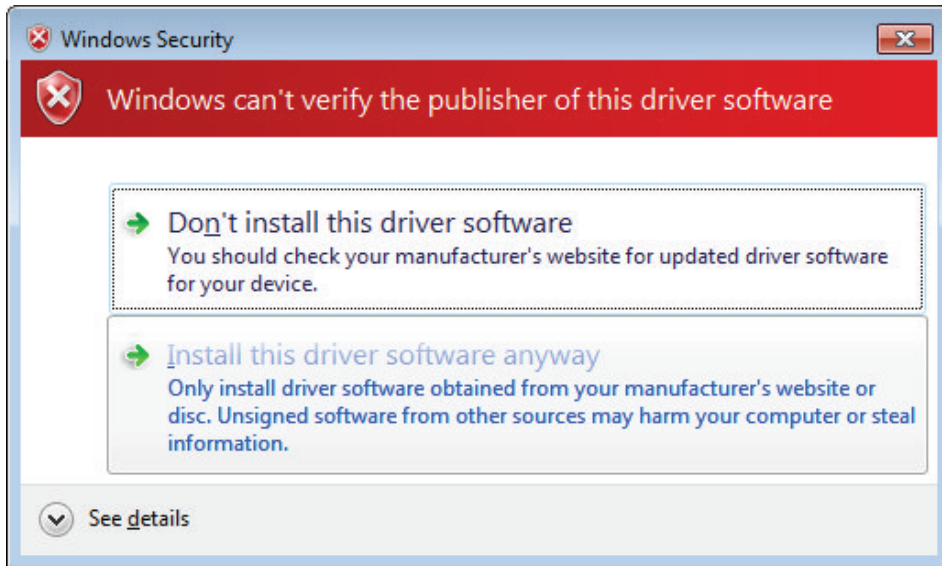
Select **'Browse my computer for driver software'**.

You will be asked for the location of your driver files.
Use **Browse** to locate the folder where you extracted the driver files.



Click **Next** to continue.

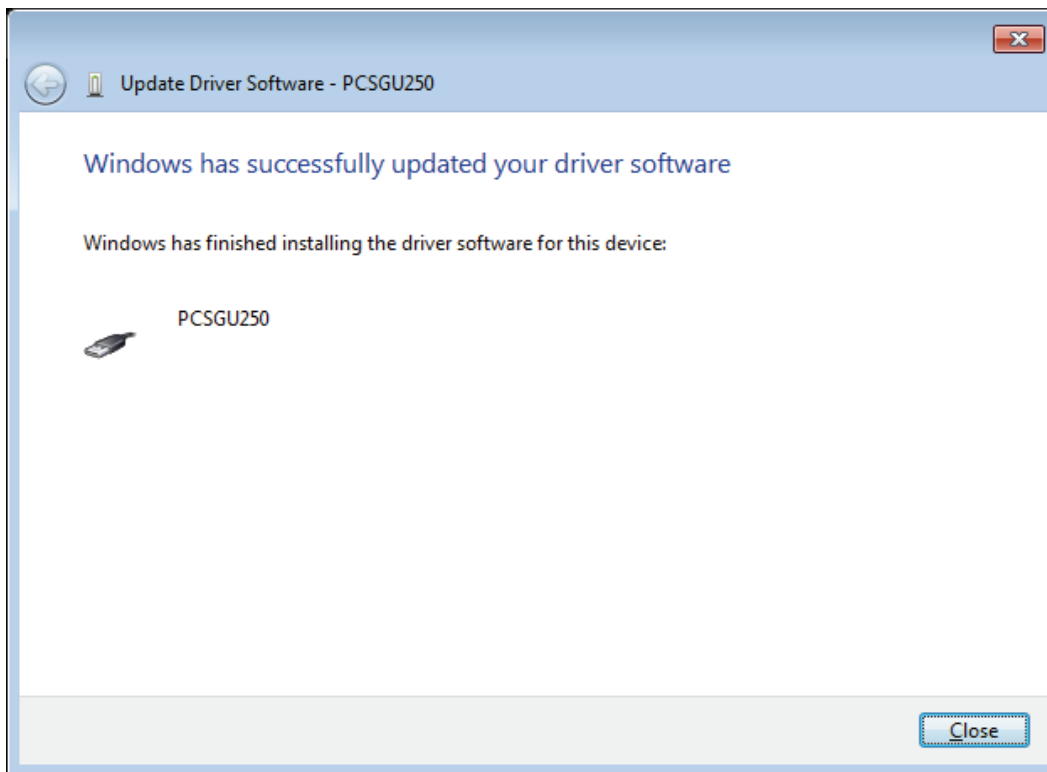
You'll receive this warning.



Click '**Install this driver software anyway**'.

This cannot harm your computer since it is safe to use our driver. Make sure you downloaded the driver or installation package from the Velleman website.

Installation should now be complete. You are ready to use the PCSGU250.



You may check the 'PCSGU250' entry under the *Custom USB Devices* category in the Device manager.

